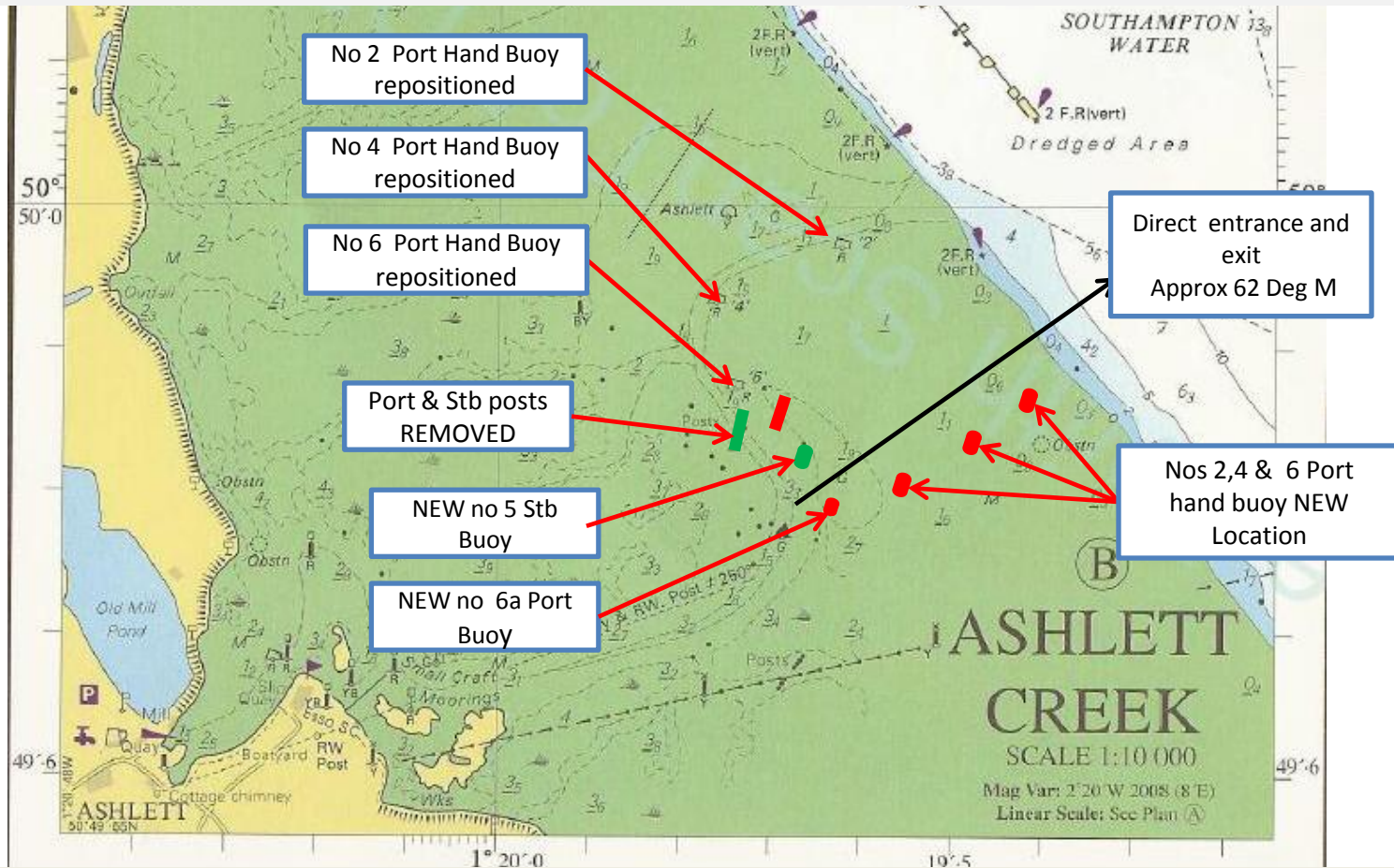


Navigation marks at the entrance to Ashlett Creek have been changed



After consultation with ABP and Trinity House, Ashlett sailing club has simplified the Navigation marks at the entrance to Ashlett creek.

For further details Contact Ashlett SC Creek master (T Page) : 07785905172

Pontoon Etiquette

- Our club pontoon is a valuable shared resource particularly to those who do not have shore access to their boat on its normal mooring, however it can get quite busy at times and so we need consideration.
- Members can stay up to 5 days without needing to request an extended stay, however, you do not HAVE to stay 5 days and it helps everybody if members can move boats back to their own mooring as soon as they possibly can.
- In order to maximise the use of the pontoon it is expected that members will often need to raft up and that boats may need to be moved at the discretion of the pontoon masters in order to maximise space.
- If you are on the pontoon then please expect other members to raft against you and put out extra fenders on the outboard side of your boat as a friendly gesture.
- If you need to raft on another boat then please ensure you use plenty of your own fenders, put out shore lines and respect other members boats as you walk across them.
- Please make direct contact with the member who's boat you have rafted onto and make arrangements so that you do not prevent them from leaving. If you don't know who you have rafted against then please contact a member of the pontoon team. Blocking another member in is not acceptable except on genuine grounds of safety.
- Please remember that some members work shifts or long hours away from the area and hence may be restricted as to when they can move their boats, If you are lucky enough to be more flexible in the times you can use your boat then please try to understand and cooperate with other members who's time to enjoy the club may be more limited.
- If you are on the pontoon in order to work on your boat then it is expected you will do your best to complete the work as quickly as possible, try not to leave your boat on the pontoon just waiting for contractors, suppliers or parts to arrive.
- If you have a specific problem and need help then please contact one of the pontoon team and we will always do our best to help you. (but we probably can't please all of the people all of the time!!)
- Please help everyone to enjoy our shared facilities

Thanks ...The pontoon team

